



# Board of County Commissioners Agenda Request

**4B**  
Agenda Item #

**Requested Meeting Date:** 9-27-22

**Title of Item:** 2023-2027 Capital Road Improvement Plan

<input checked="" type="checkbox"/> REGULAR AGENDA	<b>Action Requested:</b>	<input type="checkbox"/> Direction Requested
<input type="checkbox"/> CONSENT AGENDA	<input type="checkbox"/> Approve/Deny Motion	<input checked="" type="checkbox"/> Discussion Item
<input type="checkbox"/> INFORMATION ONLY	<input type="checkbox"/> Adopt Resolution (attach draft)	<input type="checkbox"/> Hold Public Hearing* <i>*provide copy of hearing notice that was published</i>

<b>Submitted by:</b> John Welle	<b>Department:</b> Highway Department
------------------------------------	--

<b>Presenter (Name and Title):</b> John Welle, Aitkin County Engineer	<b>Estimated Time Needed:</b> 25 minutes
--	---

**Summary of Issue:**  
The Aitkin County 5-year capital road improvement plan is updated each year through the budget process. The proposed 2023-2027 Capital Road Improvement Plan will be presented.

**Alternatives, Options, Effects on Others/Comments:**  
NA

**Recommended Action/Motion:**  
Discussion only, for future action through budget process.

**Financial Impact:**

Is there a cost associated with this request?  Yes  No

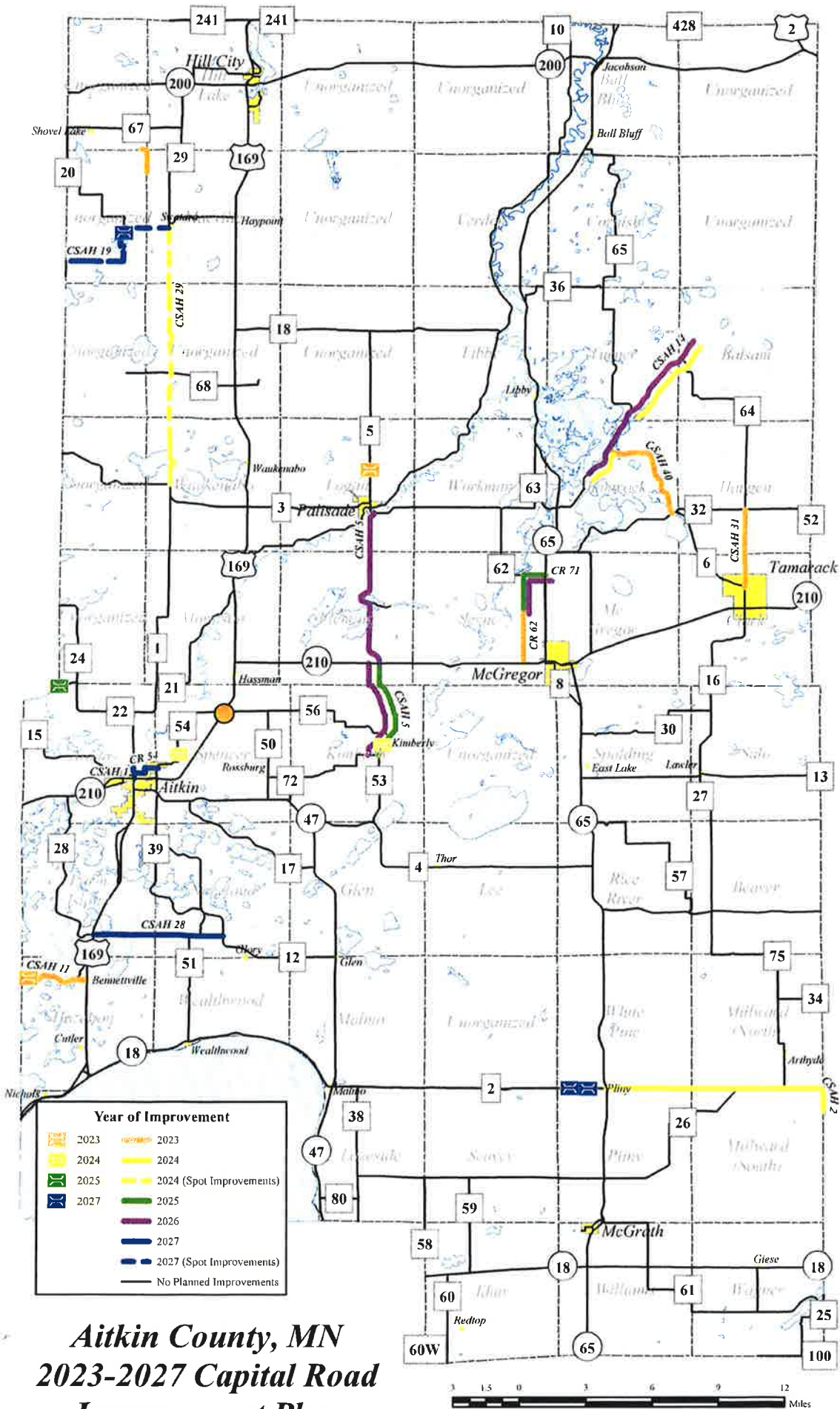
What is the total cost, with tax and shipping? \$

Is this budgeted?  Yes  No *Please Explain:*

**Proposed 2023 through 2027 Capital Road Improvement Plan**

(\*projects added from previous program\*)

	Length	Location	Pavement Age/2021 RQI	Estimated Construction Cost
<b>2023</b>				
SAP 001-605-016 - CSAH 5 Bridge No. 01509 Replacement	0.1	CSAH 5 over Willow River	LPI 44	\$ 950,000
SP 001-611-003 - CSAH 11 Widening/Resurfacing/Bridge No. 88100 Replacement	3.2		2003/2.8-2.9	\$ 3,556,725
SAP 001-631-003 - CSAH 31 Resurfacing	3.53		2002/2.2	\$ 660,000
SAP 001-640-003 - CSAH 40 Resurfacing	4.9		2002/2.6-2.7	\$ 930,000
CP 001-062-004 - CR 62 Resurfacing	2.64	TH 210 to 435th Street	2002/2.3-2.5	\$ 455,000
*SAP 001-030-008 (CH 6, 14 Culvert Rep, CH 1 SG repair, CH 8,12 Patch, others)				\$ 150,000
*Intersection Improvements on CH 54/56/US Hwy 169*				\$ 81,000
*C.P. 001-470-001 - UT 470 (400th Place) improvements*	1.2	630th Lane to 1.2 miles northwest		\$ 100,000
			<b>Total:</b>	<b>\$ 6,882,725</b>
<b>2024</b>				
SP 001-602-014 Resurfacing	10.4	TH 65 to Pine County Line	2004/3.2	\$ 2,125,000
SAP 001-605-015 - CSAH 5 Bridge No. 01508 Replacement	0.1	CSAH 5 over Rice River	LPI 38	\$ 780,000
CSAH 14 Culvert Replacements (6)	1.88	2.3 miles NE of TH 65 to CSAH 40		\$ 515,000
CSAH 14 Culvert Replacements (16)	4.44	CSAH 36 to State Park		\$ 800,000
SAP 001-598-016 - CR 54 Bridge No. 7375 Replacement	0.5	CR 54 over Sissabagamah Creek	LPI 52	\$ 510,000
*CSAH 29 Gravel Road Spot Improvements (2.8 of 6.6 miles)*	2.8	CR 68 to CSAH 19		\$ 590,000
			<b>Total:</b>	<b>\$ 5,320,000</b>
<b>2025</b>				
SAP 001-605-014 - CSAH 5 Reconstruction (Grading and Agg. Base)	4.7	CR 53 to TH 210		\$ 4,000,000
CSAH 22 Bridge No. 01502 Replacement	0.1	CSAH 22 over Wakefield Brook	LPI 61	\$ 400,000
CR 62 Reconstruction (Grading and Agg. Base)	1.36	435th Street to CR 71		\$ 755,000
CR 71 Reconstruction (Grading and Agg. Base)	1			\$ 555,000
			<b>Total:</b>	<b>\$ 5,710,000</b>
<b>2026</b>				
CSAH 5 Resurfacing	7.5	TH 210 to CSAH 3	2009/2.5-2.6	\$ 1,800,000
CSAH 5 Bituminous Paving	4.7	CR 53 to TH 210		\$ 1,600,000
CSAH 14 Resurfacing	1.88	2.3 miles NE of TH 65 to CSAH 40	2001/2.8-3.0	\$ 400,000
CSAH 14 Resurfacing	4.44	CSAH 36 to State Park	2001/2.8-3.0	\$ 780,000
CSAH 14 Reconstruction	1.92	CSAH 40 to CSAH 36	2001/2.8-3.0	\$ 2,000,000
*CR 62/71 Bituminous Paving*	2.36			\$ 780,000
*SP 001-070-009 HSIP Pavement Markings*	33.2			\$ 306,000
			<b>Total:</b>	<b>\$ 7,666,000</b>
<b>2027</b>				
CSAH 1 Resurfacing	0.45	US Hwy 169 to Mississippi River	2005/1.9-2.2	\$ 160,000
*CSAH 2 Bridge No. 7215/7216 Replacement*	0.2	CSAH 2 over Snake/Unnamed River	LPI 58/61	\$ 1,700,000
*CSAH 28 Resurfacing*	5.8	CSAH 12 to US Hwy 169	2003/3.2-3.3	\$ 1,200,000
*CR 54 Resurfacing (length expanded from previous program)*	1.3	CSAH 1 to CR 83	2003-13/2.5-2.6	\$ 250,000
*CSAH 19 Gravel Road Improvements (2.1 of 6.8 miles)*	2.1	Cass County Line to CSAH 29		\$ 490,000
*CSAH 19 Bridge No. 88102 Replacement*	0.1	CSAH 19 over Moose River		\$ 220,000
			<b>Total:</b>	<b>\$ 4,020,000</b>
<b>Five Year Total:</b>				<b>\$ 29,598,725</b>



**Aitkin County, MN  
2023-2027 Capital Road  
Improvement Plan**

Map prepared by Aitkin County GIS for graphic display purposes only.

## **Project Selection Process**

Identified improvements fall into one of four construction categories. Those categories, listed in priority order are as follows.

1. Bridge Replacement
2. Pavement Resurfacing/Shoulder Widening
3. Gravel Road Reconstruction to Paved Road Standards
4. Gravel Road Improvement

### **1. Bridge Replacement**

Bridge replacement projects are selected based on calculated sufficiency ratings that are the result of bridge safety inspections conducted on each bridge under the County's jurisdiction. See attached listing of all local highway bridges in Aitkin County. Highlighted bridges on the attachment are included in the current 5-year capital improvement program.

### **2. Pavement Resurfacing/Shoulder Widening**

Pavement resurfacing projects are selected based on pavement condition data collected on a two-year frequency. In addition, observed pavement conditions and geographical grouping of projects for lower construction costs are considered when scheduling resurfacing projects. See attached listing of Ride Quality Index (RQI) information for all of Aitkin County's paved highway segments. Highlighted segments on the attachment are included in the current 5-year capital improvement program.

The specific type of pavement resurfacing project is determined during the design stage of the project based on the project's individual characteristics. Chipseal, overlay, mill and overlay, reclaim and pave, and cold in-place recycle are included in this construction category.

For segments that have deficient shoulder width, slopes, or culverts, additional work to correct these deficiencies may be added to the resurfacing project.

### **3. Gravel Road Reconstruction to Paved Road Standards**

Projects in this category are programmed for existing gravel roads to reconstruct them as improved, paved highways. Projects are chosen based on a prioritization worksheet that ranks the various gravel road segments based on annual average daily traffic (AADT) count, residence density, functional classification, sight distance deficiencies, improved route system layout, and private land ownership. The resulting priority ratings are updated with each Capital Road Improvement Plan update. See attached priority rating worksheet. Highlighted segments on the attachment are included in the current 5-year capital improvement program.

### **4. Gravel Road Improvement**

Projects in this category involve drainage and roadbed improvements on roads that will remain as gravel surfaced roads. Projects constructed under this category are programmed based on observed deficiencies of gravel road segments.

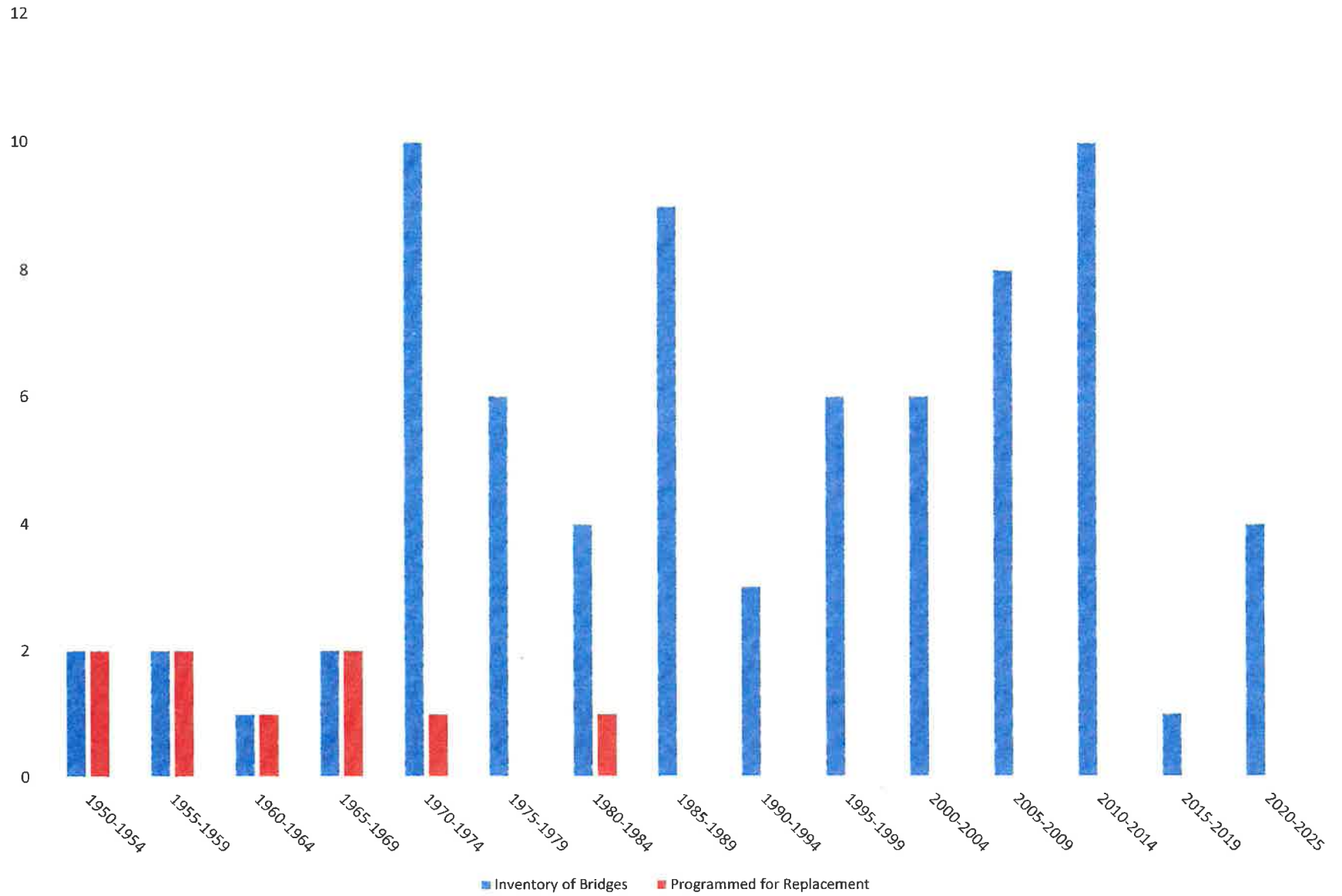
**AITKIN COUNTY  
BRIDGE ROSTER**

(Highlighted Bridges replaced in 2022 or included in 2023-2027 Capital Road Improvement Plan)

08/15/2022

Bridge Number	Roadway Name	Feature Crossed	Main Span Type	Deficiency	Sufficiency	Status
				Status	Rating	
01502	CSAH 22	WAKEFIELD BROOK	TIMB SLAB SPAN	S.D.	62.0	OPEN
01513	CSAH 29	WILLOW RIVER	TIMB SLAB SPAN	S.D.	67.8	LOAD POSTED
01508	CSAH 5	RICE RIVER	TIMB SLAB SPAN	S.D.	68.3	LOAD POSTED
01505	CSAH 18	WILLOW RIVER	TIMB SLAB SPAN	S.D.	68.4	LOAD POSTED
01509	CSAH 5	WILLOW RIVER	TIMB SLAB SPAN	S.D.	69.9	LOAD POSTED
88100	CSAH 11	RIPPLE RIVER	STEEL PIPE ARCH	ADEQ	73.5	OPEN
7375	CR 54	SISSABAGAMAH CREEK	TIMB SLAB SPAN	ADEQ	73.9	LOAD POSTED
7216	CSAH 2	SNAKE RIVER	TIMB BEAM SPAN	ADEQ	75.6	OPEN
7215	CSAH 2	STREAM	TIMB BEAM SPAN	ADEQ	78.0	OPEN
94156	CSAH 16	SANDY RIVER TRIB	TIMB BOX CULV	ADEQ	78.1	OPEN
94157	CSAH 16	SANDY RIVER	TIMB BOX CULV	ADEQ	78.1	OPEN
94154	CSAH 16	SANDY RIVER TRIB	TIMB BOX CULV	ADEQ	78.2	OPEN
94155	CSAH 16	RICE LAKE OUTLET	TIMB BOX CULV	ADEQ	79.2	OPEN
88102	CSAH 19	MOOSE RIVER	STEEL PIPE CULV	ADEQ	82.6	OPEN
L9181	CNTY 67	WILLOW RIVER	TIMB SLAB SPAN	ADEQ	85.0	OPEN
R0716	CSAH 3 FIELD ENT	DRAINAGE DITCH	STEEL PIPE ARCH	ADEQ	89.8	OPEN
R0717	CSAH 3 350TH PL ENT	DRAINAGE DITCH	STEEL PIPE ARCH	ADEQ	89.8	OPEN
01516	CSAH 23	CHAN BETWEEN TWO LAKES	PRESTR QUAD TEE	ADEQ	90.1	OPEN
01512	CSAH 28	RIPPLE RIVER	PRESTR QUAD TEE	ADEQ	91.3	OPEN
92699	CSAH 21	DITCH	STEEL PIPE CULV	ADEQ	94.8	OPEN
01506	CSAH 1	MISSISSIPPI RIVER	PRESTR BM SPAN	ADEQ	95.9	OPEN
01518	CSAH 26	SNAKE RIVER	PRESTR DOUB TEE	ADEQ	96.9	OPEN
01011	CSAH 3	CHAN BETWEEN TWO LAKES	PRESTR BM SPAN	ADEQ	97.2	OPEN
01515	CR 54	RIPPLE RIVER	PRESTR QUAD TEE	ADEQ	97.9	OPEN
01521	CR 56	RICE RIVER	TIMB SLAB SPAN	ADEQ	98	OPEN
01012	CSAH 3	MISSISSIPPI RIVER	PRESTR BM SPAN	ADEQ	98.4	OPEN
01J36	CSAH 32	CO DITCH #13	PRECST BOX CULV	ADEQ	98.9	OPEN
01526	CSAH 22	MISS R DIVERSION CHANNEL	PRESTR BM SPAN	ADEQ	99.3	OPEN
01530	CSAH 3	BIG WILLOW RIVER	PRESTR BM SPAN	ADEQ	99.3	OPEN
93455	CSAH 4	DAM BROOK	PRECST PIPE ARCH	ADEQ	99.3	OPEN
01J35	CSAH 3	WHITE ELK BROOK	PRECST BOX CULV	ADEQ	99.4	OPEN
01J04	CSAH 39	RIPPLE RIVER	PRECST BOX CULV	ADEQ	99.5	OPEN
01J08	CSAH 3	Little Willow River	PRECST BOX CULV	ADEQ	99.5	OPEN
01J28	CSAH 28	CHAN BETWEEN TWO LAKES	PRECST BOX CULV	ADEQ	99.5	OPEN
01531	CSAH 14	PRAIRIE RIVER	PRESTR BM SPAN	ADEQ	99.6	OPEN
01532	CSAH 4	RICE RIVER	PRESTR BM SPAN	ADEQ	99.6	OPEN
01533	CSAH 12 (	RIPPLE RIVER	CCONC SLAB SPAN	ADEQ	99.6	OPEN
01J33	CSAH 10	POKEGAMA CREEK	PRECST BOX CULV	ADEQ	99.6	OPEN
01J39	CSAH 15	CEDAR CREEK	PRECST BOX CULV	ADEQ	99.6	OPEN
01J45	CSAH 5	FLEMING LAKE INLET	PRECST BOX CULV	ADEQ	99.6	OPEN
92844	CSAH 3	DITCH	PRECST PIPE ARCH	ADEQ	99.6	OPEN
96703	CSAH 4	CREEK	PRECST BOX CULV	ADEQ	99.6	OPEN
01534	CR 62	SANDY RIVER	CCONC SLAB SPAN	ADEQ	99.8	OPEN
93178	CSAH 38	SEVENTEEN CREEK	PRECST PIPE ARCH	ADEQ	99.8	OPEN
96811	CSAH 2	SNAKE RIVER	PRECST PIPE ARCH	ADEQ	99.8	OPEN
01527	CSAH 1	Miss. R. Diversion Chan.	PRESTR BM SPAN	ADEQ	99.9	OPEN
01528	CSAH 32	TAMARACK RIVER	PRESTR BM SPAN	ADEQ	99.9	OPEN
01J07	CSAH 1 (	LITTLE WILLOW RIVER	PRECST BOX CULV	ADEQ	99.9	OPEN
01J22	CSAH 29	MOOSE RIVER	PRECST BOX CULV	ADEQ	99.9	OPEN
01J26	CSAH 26	STREAM	PRECST BOX CULV	ADEQ	99.9	OPEN
01J27	CR 73	MINNEWAWA CREEK	PRECST BOX CULV	ADEQ	99.9	OPEN
01J31	CR 73	SANDY RIVER	PRECST BOX CULV	ADEQ	99.9	OPEN
01J43	CSAH 14	SAVANNA RIVER	PRECST BOX CULV	ADEQ	99.9	OPEN
91895	CNTY 64	PRAIRIE RIVER	PRECST PIPE ARCH	ADEQ	99.9	OPEN
91896	CNTY 64	TAMARACK RIVER	PRECST PIPE ARCH	ADEQ	99.9	OPEN
92917	CSAH 12	RIPPLE RIVER	PRECST PIPE ARCH	ADEQ	99.9	OPEN
93122	CSAH 26	DITCH	PRECST PIPE ARCH	ADEQ	99.9	OPEN
95330	CSAH 36	STREAM	PRECST PIPE ARCH	ADEQ	99.9	OPEN
95331	CSAH 1	LITTLE WILLOW RIVER	PRECST PIPE ARCH	ADEQ	99.9	OPEN
95332	CSAH 5	SISSABAGAMAH CREEK	PRECST PIPE ARCH	ADEQ	99.9	OPEN
95612	CNTY 51	RIPPLE RIVER	PRECST PIPE ARCH	ADEQ	99.9	OPEN
01517	CSAH 10	WILLOW RIVER	PRESTR DOUB TEE	ADEQ	100.0	OPEN
01524	CR 62	SANDY RIVER	CCONC SLAB SPAN	ADEQ	100.0	OPEN
01J01	CNTY 74	MORRISON BROOK	PRECST PIPE ARCH	ADEQ	100.0	OPEN
01J02	CSAH 10	WHITE ELK BROOK	PRECST PIPE ARCH	ADEQ	100.0	OPEN
01J11	CSAH 9	Bear Creek	PRECST BOX CULV	ADEQ	100.0	OPEN
01J14	CSAH 34	BIRCH CREEK	PRECST BOX CULV	ADEQ	100.0	OPEN
01J29	CR 75	BIRCH CREEK	PRECST BOX CULV	ADEQ	100.0	OPEN
92918	CNTY 61	CHESLEY BROOK	PRECST PIPE ARCH	ADEQ	100.0	OPEN
92924	CSAH 23	STREAM	PRECST PIPE ARCH	ADEQ	100.0	OPEN
93123	CNTY 75	SPLIT ROCK RIVER	PRECST PIPE ARCH	ADEQ	100.0	OPEN
93424	CNTY 67	LITTLE HILL RIVER	PRECST PIPE ARCH	ADEQ	100.0	OPEN
94221	CNTY 61	STREAM	PRECST PIPE ARCH	ADEQ	100.0	OPEN
96142	CSAH 29	LITTLE HILL RIVER	PRECST PIPE ARCH	ADEQ	100.0	OPEN

## Bridge Age



# Bituminous Pavements - Age and RQI Data

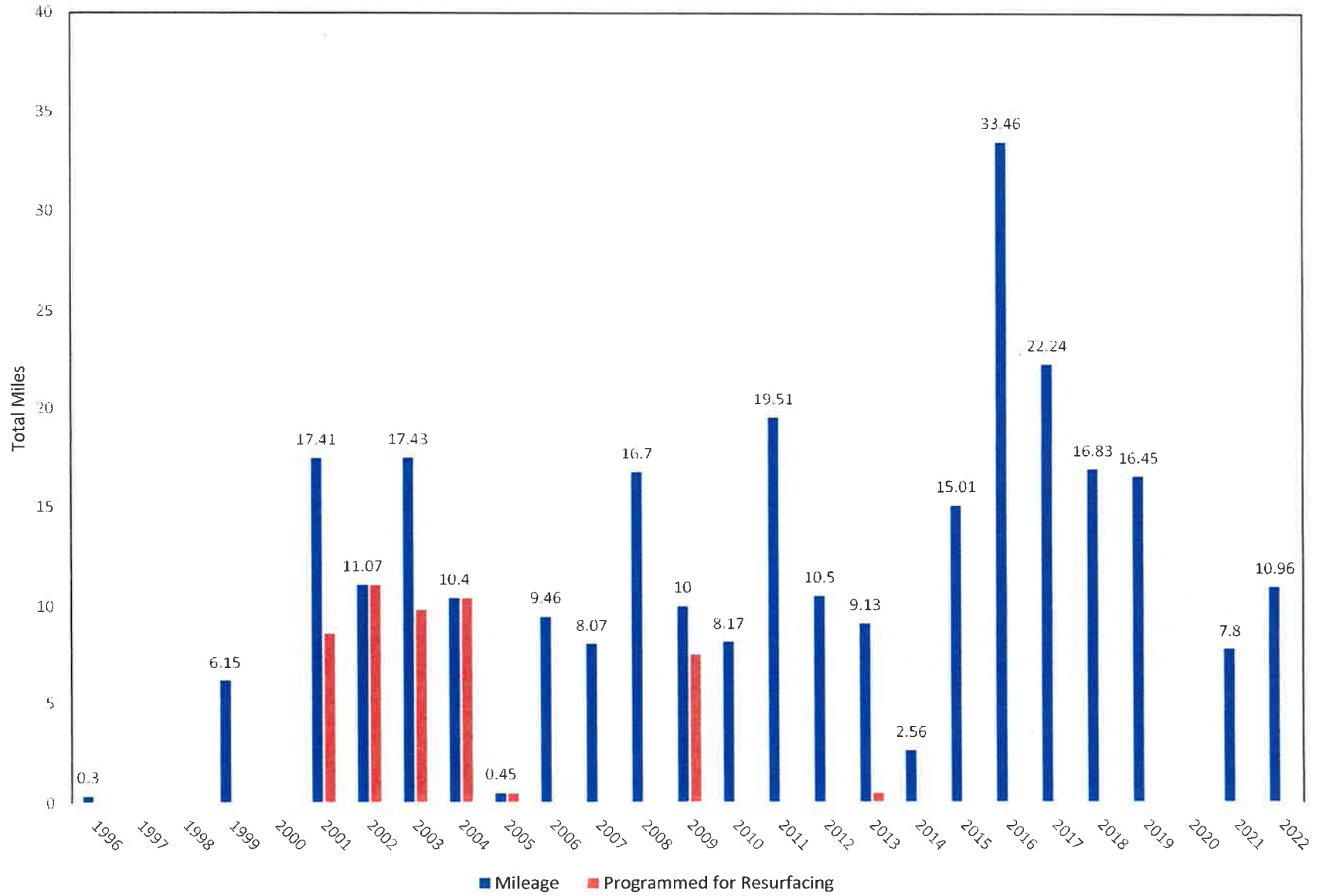
(Highlighted Segments Included in 2023-2027 Capital Road Improvement Program)

	Length	2019 RQI	2021 RQI		Length	2019 RQI	2021 RQI
<b>1996</b>				<b>2013</b>			
CR 69	0.3			CSAH 12 from .35 m. E. of N. jct. CSAH 39 to TH 47 (NW)			
				CR 54 from CSAH 1 to .47 miles east	0.47	2.3/2.5	1.9-2.3
<b>1997</b>				CR 54 from CR 83 to end of pavement	0.56	2.4/2.8	2.7/2.8
				CR 60	3.98	3.6/3.7	3.6
<b>1998</b>				CR 66 from 0.26 miles east of US 169 to US 169	0.83	2.3/2.4	2.1
				CR 77	0.57	3.5/3.7	3.3-3.6
<b>1999</b>				CR 82	1.03	2.1/2.4	1.8-2.1
CSAH 39 (2021 Chipseal)	5.1	3.5	3.4	CR 83	0.49	3.3/3.4	3.1/3.2
CR 81 (2020 Chipseal)	1.05	2.9/3.1	3.0/3.1	CR 85	1.2	2.9	2.7/2.8
<b>2000</b>				<b>2014</b>			
				CSAH 12 from .35 m. E. of N. jct. CSAH 39 to TH 47 (Wear)	2.56	3.4	3.5
<b>2001</b>				<b>2015</b>			
CSAH 14 from 2.3 m. northeast of TH 65 to State Park	8.61	2.9-3.2	2.8-3.0	CSAH 10 from US Hwy 169 to CSAH 3	7.01	3.7	3.5/3.6
CSAH 22 (2022 Chipseal)	4.6	3.4/3.5	3.3/3.4	CSAH 28 from TH 210 to TH 169	8	3.6	3.4/3.5
CSAH 24 (2022 Chipseal)	4.2	3.6	3.4				
<b>2002</b>				<b>2016</b>			
CSAH 31	3.53	2.3	2.2	CSAH 2 from TH 47 to TH 65	12.38	3.5/3.6	3.3
CSAH 40	4.9	2.8/2.9	2.6/2.7	CSAH 3 from north jct. CSAH 5 to 6.36 miles east	6.2	3.7	3.7
CR 62 from TH 210 to 435th Street	2.64	2.5/2.7	2.3-2.5	CSAH 12 from TH 47 to TH 210	0.58	3.0/3.2	3.0/3.2
				CSAH 12 from TH 47 to 375th Avenue	6.88	3.7/3.8	3.4
<b>2003</b>				CSAH 13 from TH 65 to CSAH 16	5.39	3.6/3.7	3.4/3.5
CSAH 11	3.2	2.8/3.0	2.8/2.9	CSAH 41 from 1st Street to west jct. TH 210	1.01	3.2/3.3	3.1/3.2
CSAH 23 (2022 Chipseal)	5.3	3.3/3.8	3.4-3.7	CR 88	1.02	2.9/3.5	2.8/3.3
CSAH 28 from TH 169 to CSAH 12	5.8	3.4	3.2/3.3				
CSAH 37	2.3	2.6/2.9	2.5/2.7	<b>2017</b>			
CR 54 from .47 miles east of CSAH 1 to CR 83	0.83	2.4/2.5	2.5/2.6	CSAH 1 from CSAH 22 to 3.6 miles north	3.6	3.5/3.6	3.4/3.5
				CSAH 10 from CSAH 3 to CSAH 18	11.06	3.8/3.9	3.6/3.7
<b>2004</b>				CSAH 15 from Crow Wing County Line to CSAH 1	6.08	2.9/3.8	3.6/3.7
CSAH 2 from TH 65 to Pine County Line	10.4	3.3	3.2	CR 74	1.5	3.5/3.7	3.3/3.4
<b>2005</b>				<b>2018</b>			
CSAH 1 from TH 210 to beginning of Mississippi River B	0.45	2.2/2.4	1.9-2.2	CSAH 6 from TH 65 to 5.3 miles east	4.9	4.1	4.0
				CSAH 8 from TH 210 to old Soo Line RR	0.87	3.0	2.9/3.0
<b>2006</b>				CSAH 12 from 375th Avenue to Lanie's corner	2.74	3.9	3.5/3.6
CSAH 3 from Crow Wing County Line to CSAH 29	5.74	3.3/3.4	3.2	CSAH 12 from Lanie's Corner to n. jct. CSAH 39	1.95	3.4	3.4/3.6
CSAH 7	3.2	3.1	2.8/2.9	CSAH 32 from CSAH 6 to CSAH 31	3.29	4.1	3.9
CR 66 from US 169 to 0.26 miles east	0.26	1.6	1.5/1.6	CR 53 from CSAH 4 to 0.78 mile north	3.08	3.7	3.5
CSAH 29 from CSAH 19 to CSAH 7	0.26	3.4	3.2-3.5				
<b>2007</b>				<b>2019</b>			
CSAH 8 from old Soo Line RR to TH 65	1.97	3.3	3.1	CSAH 3 from CSAH 29 to TH 169	4.15		
CSAH 38	6.1	3.2/3.3	3.2	CSAH 10 from TH 200 to Itasca County Line	2.25		
				CSAH 16	8.9		
<b>2008</b>				CSAH 41 from east jct. TH 210 to 1st Street	0.07		
CSAH 4 from TH 47 to TH 65	14.4	3.2/3.3	3.0/3.1	CR 70	1.08		
CSAH 29 from CSAH 3 to 509th Lane	2.3	2.6/2.7	2.6	<b>2020</b>			
<b>2009</b>				<b>2021</b>			
CSAH 1 from beginning of Mississippi River Bridge to CS	2.5	3.2	3.2/3.3	CSAH 3 from 6.36 miles east of north jct CSAH 5 to TH 65	3.2		
CSAH 5 from TH 210 to TH 232	7.5	2.6/2.7	2.5/2.6	CSAH 9	0.77		
				CSAH 25	3.29		
<b>2010</b>				CR 79	0.54		
CSAH 10 from CSAH 18 to 8.2 miles south of TH 200	6.88	3.5	3.4	<b>2022</b>			
CSAH 33	0.29	3.2	2.0/2.1	CSAH 17	7.1		
CR 62 from TH 232 to 1.0 mile south	1.0	3.4		CR 76	2.82		
				CR 77W	1.04		
<b>2011</b>							
CSAH 6 from 5.27 miles east of TH 65 to TH 210	8.08	2.8/3.0	2.7-3.0	Subtotal:	134.44		
CSAH 10 from TH200 to 8.12 miles south	8.12	3.2	2.9	Grand Total:	280.06		
CSAH 32 from CSAH 31 to Carlton County Line	3.01	3.6/3.7	3.5				
CR 241	0.3						
<b>2012</b>							
CSAH 3 from US Hwy 169 to n. jct. CSAH 5	5.6	3.3/3.5	3.1-3.5				
CSAH 5 from TH 47 to CR 50	1	3.4/3.5	3.3-3.4				
CSAH 14 from TH 65 to 2.3 miles northeast	2.3	3.3/3.4	3.2				
CSAH 36 from CSAH 14 to 1.6 mile north	1.6	2.6/2.9	2.6-2.8				
Sub-total:	145.62						

Updated: 8-15-22

2021 Pavement Quality Summary		
	Good (RQI > 3)	Poor (RQI <= 2)
MnDOT District 1 (non-NHS)*	65.2%	5.9%
MnDOT District 3 (non-NHS)*	71.4%	0.7%
Aitkin County Roads and County State-Aid Highways	80.0%	0.4%
<i>*Based on 2020 Report</i>		

# Pavement Age





## Priority Rating Worksheet

(Highlighted Segments Included in 2023-2027 Capital Road Improvement Program)

8/15/2022

Road Number	Segment Description	Length	2016 ADT (20 points decile)	Residence Density (20 point decile)	Functional Classification (10 points)	Sight Distance Deficiency (10 point decile)	Improved Route System Layout (10 points)	Privately-Owned Land (10 point decile)	Priority Rating (80 points)
5.2	CR 53 to TH 210	4.7	12	20	10	6	10	7	58.7
71		1	20	12	4	1	10	10	48.0
1	3.6 miles N of CSAH 22 to CSAH 3	7.4	16	6	10	2	10	6	44.6
30	TH 65 to CSAH 16	7	16	14	7	6	0	10	44.0
51	TH 18 to CSAH 28	4.77	12	14	4	3	10	8	43.8
62.1	2 miles N of TH 210 to CR 71	1.36	20	6	4	1	10	10	42.0
64.2	CSAH 32 to 5 miles North	5	16	16	4	3	0	3	39.3
50	CSAH 5 to CR 56	2.95	18	2	4	3	10	10	38.0
13	CSAH 16 to Carlton County Line	5.6	12	2	7	4	10	5	35.5
62.2	CR 71 to 1 mile south of TH 232	3	10	8	4	1	10	10	34.0
19.2	CSAH 20 to CSAH 29	2	14	4	10	5	0	3	33.3
19.1	Cass County Line to CSAH 20	4.8	6	10	10	7	0	2	33.2
5.1	CR 50 to CR 53	5.9	8	10	10	4	0	10	33.0
57.1	TH 65 to 5 miles east	5	14	8	4	5	0	10	32.0
27	CSAH 13 to TH 27	6.6	4	6	7	4	10	9	31.9
74		2.07	4	6	4	4	10	10	29.0
36.2	CR 65 to 1.5 miles N of CSAH 14	5.2	8	6	7	7	0	5	28.5
59		4.28	16	4	4	3	0	10	28.0
63		2.69	6	8	4	9	0	10	28.0
54	End of Blacktop to TH 210	4.88	8	2	4	3	10	10	28.0
29.3	CSAH 7 to CR 67	4.54	10	6	7	4	0	6	27.6
36.1	TH 65 to CR 65	4.2	8	4	7	8	0	3	27.3
65		8.96	6	6	4	10	0	3	26.3
61.1	TH 65 to TH 18	4.23	6	10	4	5	0	10	26.0
72		1.2	8	8	4	5	0	10	26.0
64.1	5 miles N of CSAH 32 to CSAH 14	4.49	6	10	4	5	0	6	25.6
21	CSAH 1 to TH 169	6.9	6	4	10	4	0	10	25.0
75	TH 27 to CSAH 34	6.9	4	8	7	5	0	6	24.6
73		5.1	14	4	4	2	0	6	24.6
5.3	CSAH 3 to CSAH 18	7.81	10	6	7	1	0	5	24.5
26.3	TH 65 to CSAH 2	9.1	8	4	7	4	0	3	23.3
29.4	CR 67 to TH 200	2	10	4	7	2	0	2	23.2
26.1	CSAH 38 to CR 59	5	8	4	7	3	0	10	23.0
60W		1.08	10	6	4	2	0	10	23.0
35	TH 65 to Itasca County Line	0.4	8	4	7	1	0	10	21.0
20	Cass County Line to CSAH 19	5.9	6	4	7	3	0	6	20.6
61.2	TH 18 to CSAH 23	7	4	6	4	5	0	9	19.9
68.1	CSAH 29 to dead end west	2	4	6	4	5	0	8	19.8
26.2	CR 59 to TH 65	6	4	6	7	2	0	7	19.7
29.2	CR 68 to CSAH 7	6.3	6	4	7	2	0	1	19.1
34	CSAH 2 to CR 75	6.3	4	4	7	3	0	6	18.6
80		1.7	6	4	4	3	0	10	18.0
29.1	2.3 miles N of CSAH 3 to CR 68	3.3	6	2	7	2	0	3	17.3
57.2	TH 27 to 4 miles North	4.04	2	4	4	6	0	10	17.0
58		2.67	4	4	4	4	0	8	16.8
67		5.17	2	4	4	6	0	8	16.7
56.1	TH 210 to CR 50	2	8	2	4	1	0	6	15.6
68.2	CSAH 29 to TH 169	3.3	4	4	4	3	0	2	15.2
68.3	TH 169 to dead end east	1.2	4	4	4	2	0	8	14.8
18.2	CSAH 5 to CSAH 10	6.1	2	2	7	2	0	10	14.0
56.2	CR 50 to CSAH 5	6.4	2	2	4	5	0	8	13.7
18.1	TH 169 to CSAH 5	6.1	2	2	7	1	0	3	12.3

2016 ADT: Up to 20 points in ten decile ranges based on actual 2016 Average Annual Daily Traffic Count

Residence Density: Up to 20 points in ten decile ranges based on total number of residences on segment and adjacent road segments

Functional Classification: 10 points for major collector classification, 7 points for minor collector classification, 4 points for local road classification

Sight Distance Safety Rating: Up to 10 points in ten decile ranges based on horizontal and vertical curve sight distance deficiency

Improved Route System Layout: 10 points if either a) part of route is improved or b) does not have parallel improved route within 4 miles for 50% of segment length, and segment connects two improved routes within a distance of less than 8 miles

Privately Owned Land: Up to 10 points based on percentage of privately-owned land adjacent to segment